



**Test Report (TR S2510-PoE-DC)**  
***Patch Version 2.2.0C Build 71585***



## Table of Contents

<b>1. Introduction</b>	<b>3</b>
<b>2. About This Test Report</b>	<b>3</b>
<b>3. Test Report</b>	
<b>A. RJIL-IP-QA-DS-SYS-070</b>	<b>4</b>



## **1. Introduction**

The document communicates the test result for mentioned test-cases of TR S2510-PoE-DC.

## **2. About this test report**

This Test Report provides information for IGMP static join features.

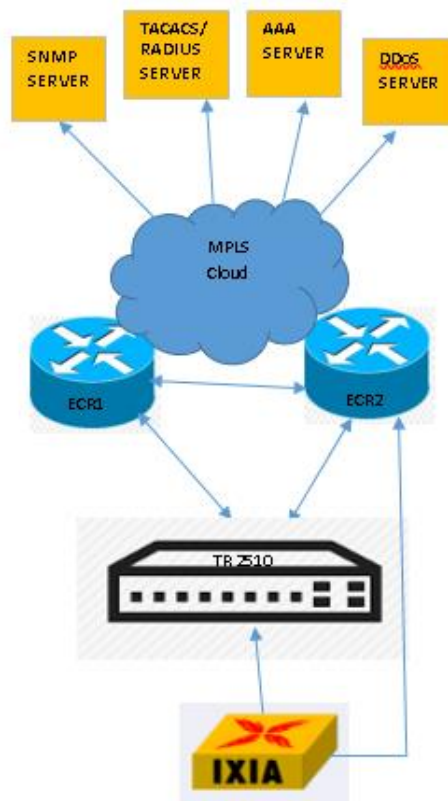
Present software version- Version 2.2.0C Build 71585;

Present hardware version- V1.0;

### 3. Test Reports

#### A. RJIL-IP-QA-DS-SYS-070

##### Topology



##### Configuration: -

(S2510POE)

!

!

vlan 1,890

!

!

ip igmp-snooping vlan 1 static 225.1.1.1 interface g0/4

ip igmp-snooping vlan 1 static 239.0.1.2 interface g0/4

!

!

**Result: -**

Switch\_config#show ip igmp-snooping groups source

Total Group Counts: 2

vlan: 1, group(S): 225.1.1.1, filter\_mode = NULL

Port(s-static, l-learning)

-----  
g0/4(s)

vlan: 1, group(S): 239.0.1.2, filter\_mode = NULL

Port(s-static, l-learning)

-----  
g0/4(s)

**Interface logs: -**

```
Switch_config#show interface g0/4
GigaEthernet0/4 is up, line protocol is up
  Ifindex is 4, unique port number is 4
  Hardware is Giga-TX, address is 5ccc.ff13.lffb (bia 5ccc.ff13.lffb)
  MTU 1500 bytes, BW 1000000 kbit, DLY 10 usec
  Encapsulation ARPA
  Auto-Duplex(Full), Auto-Speed(1000Mb/s), Flow-Control Off
  5 minutes input rate 369 bits/sec, 0 packets/sec
  5 minutes output rate 345 bits/sec, 0 packets/sec
  Received 1599 packets, 227593 bytes
    221 broadcasts, 1264 multicasts
  872 discard, 0 error, 0 PAUSE
  0 align, 0 FCS, 0 symbol
  0 jabber, 0 oversize, 0 undersize
  0 carriersense, 0 collision, 0 fragment
  0 L3 packets, 0 discards, 0 Header errors
  Transmitted 1573 packets, 115980 bytes
    1 broadcasts, 1459 multicasts
  0 discard, 0 error, 0 PAUSE
  0 sgettest, 0 deferred, 0 oversize
  0 single, 0 multiple, 0 excessive, 0 late
  0 L3 forwards
Switch_config#show interface g0/4
GigaEthernet0/4 is up, line protocol is up
  Ifindex is 4, unique port number is 4
  Hardware is Giga-TX, address is 5ccc.ff13.lffb (bia 5ccc.ff13.lffb)
  MTU 1500 bytes, BW 1000000 kbit, DLY 10 usec
  Encapsulation ARPA
  Auto-Duplex(Full), Auto-Speed(1000Mb/s), Flow-Control Off
  5 minutes input rate 398 bits/sec, 0 packets/sec
  5 minutes output rate 335 bits/sec, 0 packets/sec
  Received 1607 packets, 228633 bytes
    221 broadcasts, 1272 multicasts
  880 discard, 0 error, 0 PAUSE
  0 align, 0 FCS, 0 symbol
  0 jabber, 0 oversize, 0 undersize
  0 carriersense, 0 collision, 0 fragment
  0 L3 packets, 0 discards, 0 Header errors
  Transmitted 1575 packets, 116108 bytes
    1 broadcasts, 1461 multicasts
  0 discard, 0 error, 0 PAUSE
  0 sgettest, 0 deferred, 0 oversize
  0 single, 0 multiple, 0 excessive, 0 late
  0 L3 forwards
```